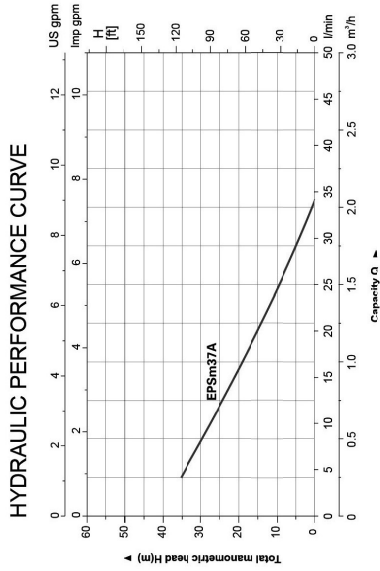




EPSm



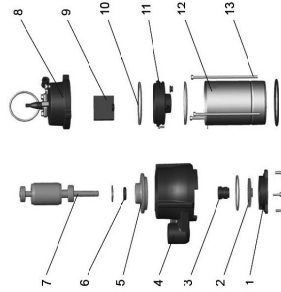
MODEL	POWER (kW)	POWER (HP)	OUTLET	MAX.FLOW (L/min)	MAX.HEAD (m)	MAX. IMMERSION (m)
EPSm37A	0.37	0.5	1"	35	42	5

PUMP

- Submersible peripheral pump
- Special anti-rust treatment for cast iron pump body
- Max. fluid temperature: +40°C
- Max. immersion depth: 5 m
- Liquid PH value: 6.5 – 8
- Maximum sand content: 1%
- Maximum solid diameter: 0.2 mm

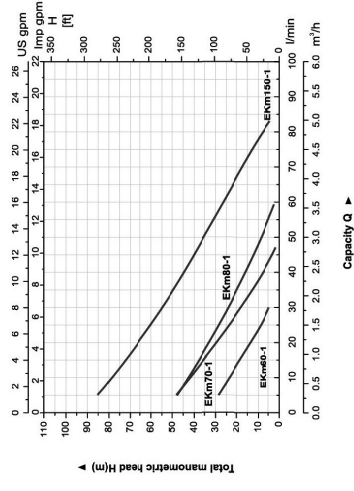
MOTOR

- Motor with copper winding
- Insulation class: F
- Protection class: IPX8



Part	Part
1	Casing cover
2	Impeller
3	Mechanical seal
4	Pump body
5	Lower bearing seat
6	Oil seal
7	Rotor
8	Top cover
9	Capacitor
10	O-ring
11	Upper bearing seat
12	Barrel
13	Screw

HYDRAULIC PERFORMANCE CURVE



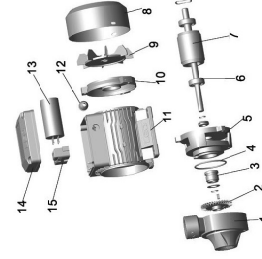
EKM

PUMP

- Transfer of clean water or non-aggressive liquid
- Brass impeller
- Special anti-rust treatment for pump body and support
- Max. liquid temperature: +60°C
- Max. suction: +0 m

MOTOR

- Copper winding
- Built-in thermal protector for single phase motor
- Insulation class: F
- Protection class: IPX4
- Max. ambient temperature: +40°C



Part	Material	Remark
1	Pump body	Cast iron
2	Impeller	Brass
3	Mechanical seal	Ceramic/Carbon
4	Sealing ring	NBR
5	Support	Cast iron
6	Bearing	Cast iron
7	Rotor	Cast iron
8	Fan cover	Iron
9	Fan	PP
10	End plate	Aluminum
11	Stator	Aluminum casting
12	Outlet nozzle	NBR
13	Capacitor	NBR
14	Cover box	ABS
15	Terminal	ABS